

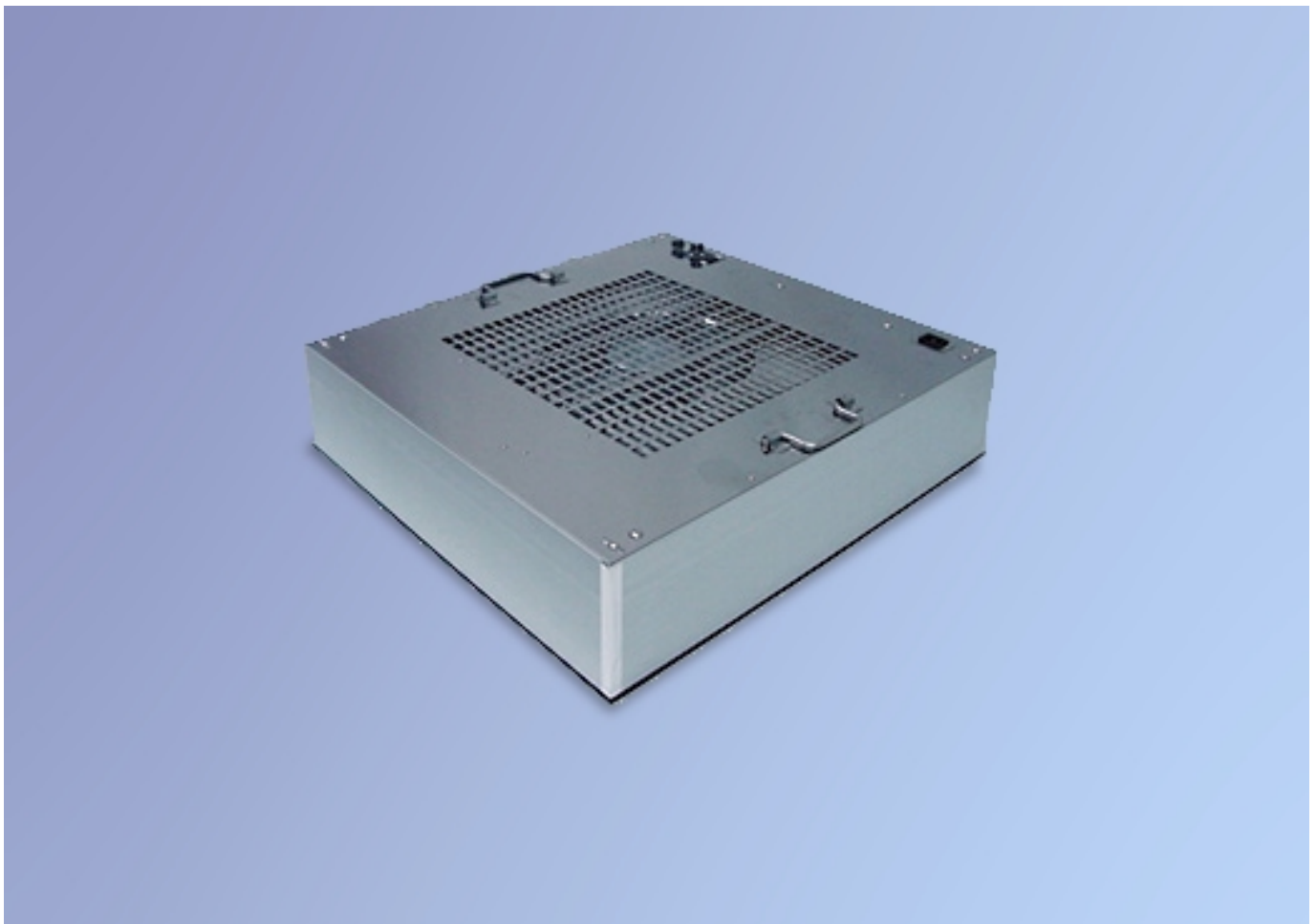
Thin, energy-saving fan filter unit

GIGA PAC



9G-59-A

With the revolutionary new GIGA PAC, all functions for the supply of clean air have been integrated into a single, compact, lightweight module.



- Energy-saving : 35W-75W ●Thin : 150mm ●Lightweight : 15k(GP-H22,GP-U22)
- Continuously variable capacity ●Equipped with brushless DC motor
- Built-in control circuit and trouble alarm circuit
- Outgas-free : at or below detection limits for siloxane and organic phosphorus

With its thin, lightweight HEPA (ULPA) filter unit, the GIGA PAC fan/filter unit is easily installed on equipment or in clean booths. Use of a brushless DC motor significantly reduces power consumption, and capacity is continuously variable.

Applications

Thin and lightweight, this fan filter is easily installed in clean booths used in the production of semiconductors, liquid crystals, electronic components, and pharmaceuticals. It can also be directly installed in industrial equipment used to produce semiconductors, liquid crystals, electronic components, pharmaceuticals and other products.

Features

1. Low energy consumption

The use of a brushless DC motor results in power consumption of about 30% less than that of conventional induction motors.

2. Thin and lightweight

Use of an ultra-thin fan results in an overall weight of only 15 kg and height of 150 mm (610 x 610 x 150mm)

3. Built-in controller

The control circuit has been miniaturized through the use of a driver circuit IC, and the controller section includes a trouble alarm circuit built into the main unit.

4. Capacity adjustment dial (can be set up externally)

Capacity can be smoothly and variably adjusted using the capacity adjustment dial.

5. Laminar flow

New unit construction reduces blow speed variation to $\pm 20\%$ or less.

6. CE (European safety standard) compatible

The standard unit employs as EMC (EMI EMS) noise filter.

7. Equipped with inlet cover

The standard unit employs this as a safety measure.

8. Options

Options consist of a prefilter nonwoven cloth filter, trouble indicator lamp, and clean booth assembly kit.

9. Outgas minimization

Exhaust gases are free of DOP and siloxane, with organic phosphorus at or below detection limits.

Standard specifications

1. Using main unit

Item	Model	HEPA specifications						ULPA specifications					
		GP-H22			GP-H24			GP-U22			GP-U24		
External dimensions mm		610 x 610 x 150			610 x 1220 x 150			610 x 610 x 150			610 x 1220 x 150		
Capacity m ³ /min		5.0	7.0	9.0	7.0	10.0	14.5	5.0	7.0	9.0	7.0	10.0	14.5
Blow velocity		0.25	0.35	0.45	0.17	0.24	0.35	0.25	0.35	0.45	0.17	0.24	0.35
Power supply		GP-H24											
Collection		99.99% or better for 0.3 μ m particles						99.999% or better MPPS (0.15 μ m) particles					
Power consumption w		35	50	75	35	50	75	35	50	75	35	50	75
Noise dB(A)		52	55	59	53	56	59	52	55	59	53	56	59
Weight kg		15			20			15			20		
Main filter		HEPA filter 3401 series						ULPA filter 5441 series					
Main unit		Side panel : Extruded aluminum/Top plate : SUS430BA											
Blow surface		Aluminum lath screen											
Fan		Turbo fan											
Motor		Brushless DC motor											
Prefilter		Nonwoven cloth filter(Optional)											
Power supply connection		Terminal block connection											

Figures are for the case when no static pressure occurs outside the machine.

2. Filter specifications

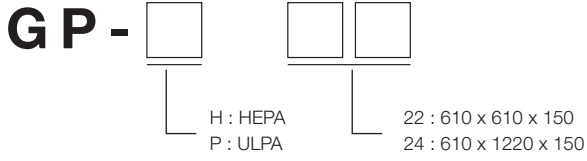
Grade	Series
HEPA	3401-F2 (4)*
ULPA	5441-F2 (4)*

*F2 = 610 x 610 x 150

*F4 = 610 x 1220 x 150

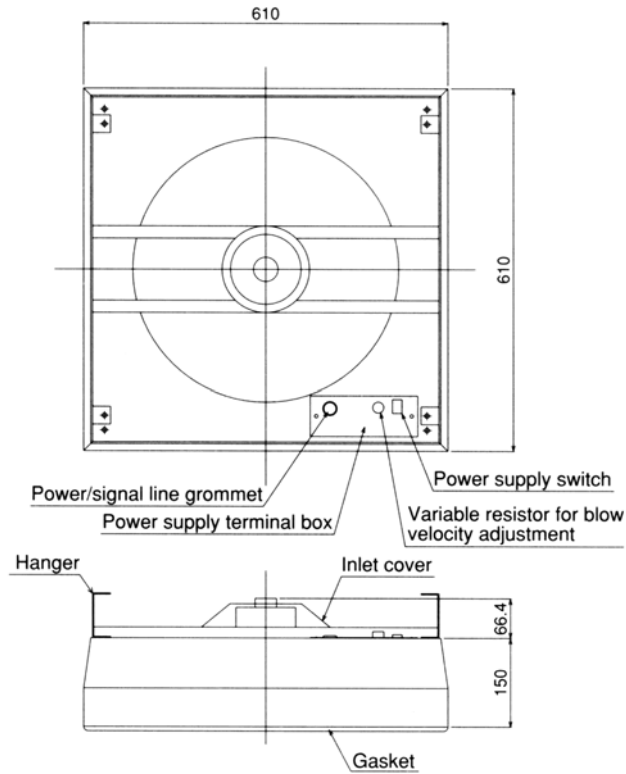
Model names

Models are named according to the filter grade and unit dimensions.

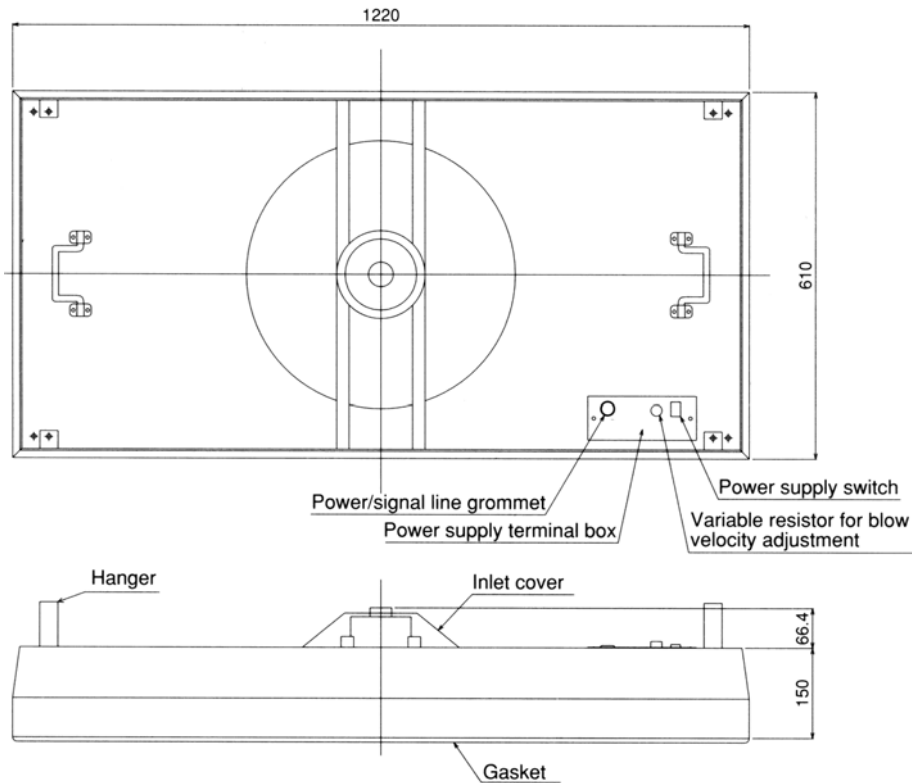


Views

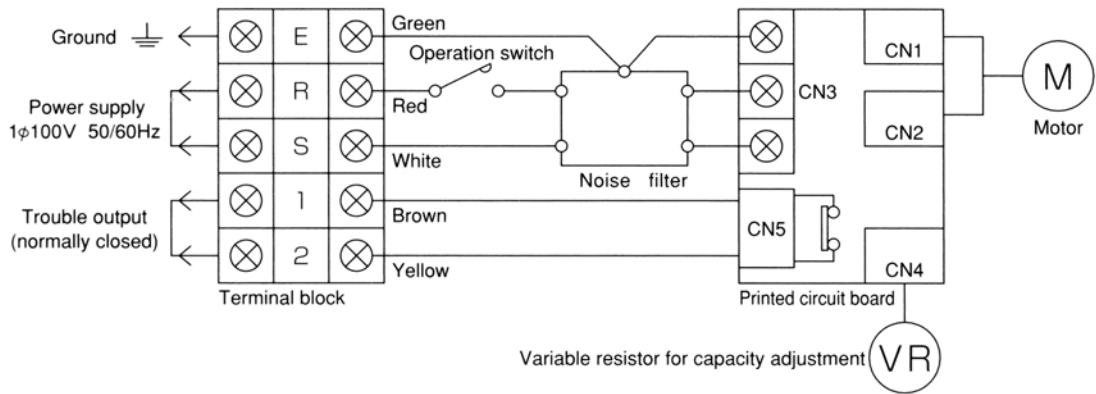
GP - - 22



GP - - 24

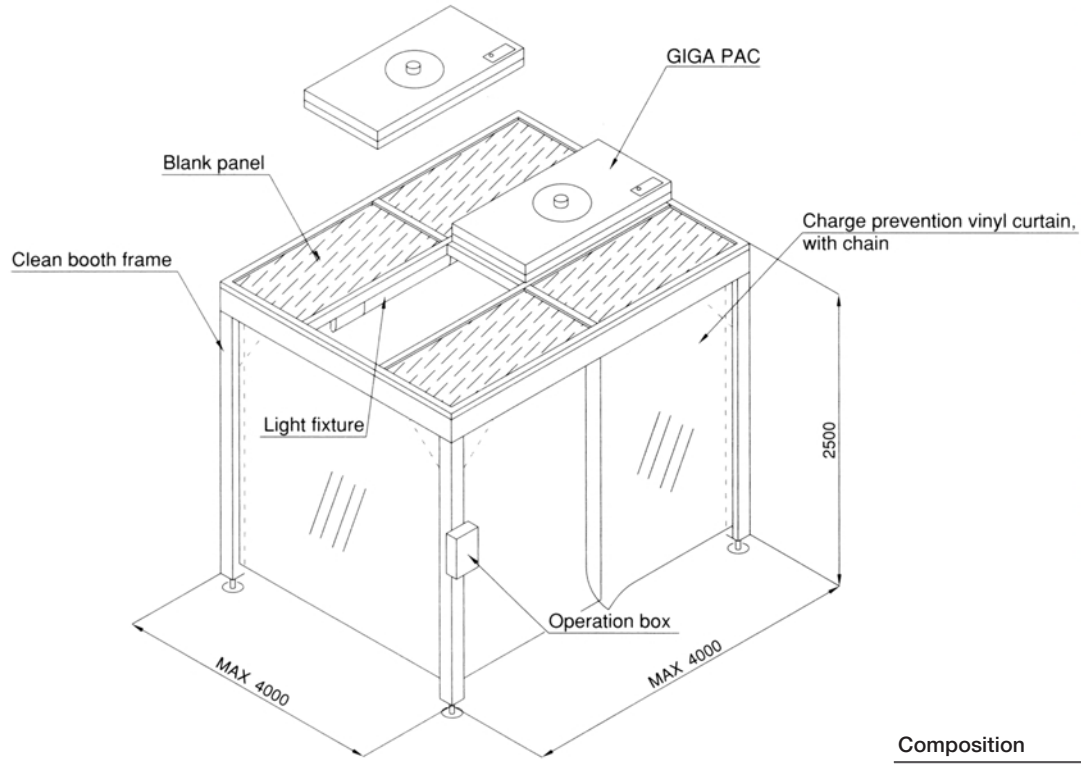


Wiring diagram



Clean booth assembly kit

Clean booth GIGA PAC installation example



Composition

	Specifications
Frame	Extruded aluminum
Vinyl curtain	Charge prevention
Lighting	TD type

With a view improvement products reserve the right to make all necessary changes without notice

TAIWAN NITTA FILTER CO., LTD.

Head office : Chia Hsin Building 10 Fl., Room No. 1005, 96 Chung Shan N. Rd., Sec. 2, Taipei, Taiwan, R. O. C.
 Factory : 2-1, Industrial 2nd Rd, Pinchen Industrial Park, Taoyuan, Taiwan, R.O.C.
 Shanghai Office: Unit 2009A, Light Industry International Building 198 Si-Ping Road Shanghai, 200086, China

<http://www.nitta.com.tw>

TEL:+886-2-2581-6296 FAX:+886-2-2563-4900
 TEL:+886-3-469-7551 FAX:+886-3-469-0260
 TEL:+86-21-6507-9590 FAX:+86-21-6507-9697

