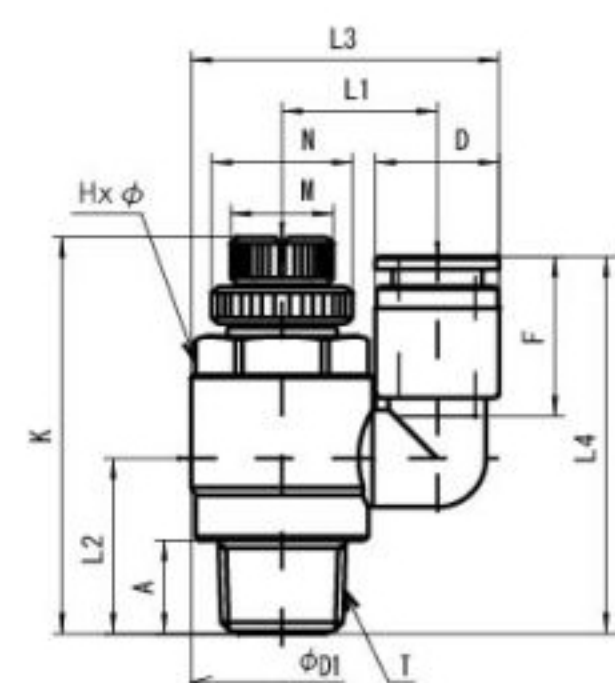


特長



寸法表

スピードコントローラ・バルブ/コンパクトスピードコントローラ/ユニバーサル

品番	CAD DATA	適用チューブ外径 (mm)	Tねじサイズ (M)	Tねじサイズ (R)	L1 (mm)	L2 (mm)	L3 (mm)	L4 (mm)	K全開 (mm)	K全閉 (mm)	A (mm)	Fチューブ挿入長さ (mm)	Hxφ二面幅	N (mm)	M (mm)	D (mm)	D (mm)
ASD4-M5-O	DWF DXF DWG ME10	4	M5x0.8	—	9.9	10.1	18.7	24.5	28.6	25.8	3.4	11	8.0x9.0	8	5	8	8
ASD4-M5-I	DWF DXF DWG ME10	4	M5x0.8	—	9.9	10.1	18.7	24.5	28.6	25.8	3.4	11	8.0x9.0	8	5	8	8
ASD4-R1/8-O	DWF DXF DWG ME10	4	—	R1/8	12.2	13.7	23.3	28.0	36	31	7.3	11	12.0x13.5	11	8	8	14
ASD4-R1/8-I	DWF DXF DWG ME10	4	—	R1/8	12.2	13.7	23.3	28.0	36	31	7.3	11	12.0x13.5	11	8	8	14
ASD6-M5-O	DWF DXF DWG ME10	6	M5x0.8	—	9.9	10.1	19.5	25.9	28.6	25.8	3.4	12	8.0x9.0	8	5	10	10
ASD6-M5-I	DWF DXF DWG ME10	6	M5x0.8	—	9.9	10.1	19.5	25.9	28.6	25.8	3.4	12	8.0x9.0	8	5	10	10
ASD6-R1/8-O	DWF DXF DWG ME10	6	—	R1/8	12.2	13.7	24.1	29.4	36	31	7.3	12	12.0x13.5	11	8	10	14
ASD6-R1/4-O	DWF DXF DWG ME10	6	—	R1/4	14.3	17.1	28.4	32.9	40.3	35.3	10.8	12	14.0x15.8	13	10	10	14
ASD6-R1/4-I	DWF DXF DWG ME10	6	—	R1/4	14.3	17.1	28.4	32.9	40.3	35.3	10.8	12	14.0x15.8	13	10	10	14
ASD8-R1/8-O	DWF DXF DWG ME10	8	—	R1/8	16.1	14.4	30.5	35.1	36	31	7.3	16	12.0x13.5	11	8	14.6	14
ASD8-R1/8-I	DWF DXF DWG ME10	8	—	R1/8	16.1	14.4	30.5	35.1	36	31	7.3	16	12.0x13.5	11	8	14.6	14
ASD8-R1/4-O	DWF DXF DWG ME10	8	—	R1/4	18.2	18.0	34.8	38.7	40.3	35.3	10.8	16	14.0x15.8	13	10	14.6	14
ASD8-R1/4-I	DWF DXF DWG ME10	8	—	R1/4	18.2	18.0	34.8	38.7	40.3	35.3	10.8	16	14.0x15.8	13	10	14.6	14
ASD8-R3/8-O	DWF DXF DWG ME10	8	—	R3/8	20.3	18.7	38.9	39.4	46.3	41.3	11.1	16	19.0x21.0	16	13	14.6	20
ASD8-R3/8-I	DWF DXF DWG ME10	8	—	R3/8	20.3	18.7	38.9	39.4	46.3	41.3	11.1	16	19.0x21.0	16	13	14.6	20
ASD10-R1/4-O	DWF DXF DWG ME10	10	—	R1/4	18.2	18.0	36.2	42.6	40.3	35.3	10.8	19	14.0x15.8	13	10	17.5	14
ASD10-R1/4-I	DWF DXF DWG ME10	10	—	R1/4	18.2	18.0	36.2	42.6	40.3	35.3	10.8	19	14.0x15.8	13	10	17.5	14
ASD10-R3/8-O	DWF DXF DWG ME10	10	—	R3/8	20.3	18.7	40.3	43.3	46.3	41.3	11.1	19	19.0x21.0	16	13	17.5	20
ASD10-R3/8-I	DWF DXF DWG ME10	10	—	R3/8	20.3	18.7	40.3	43.3	46.3	41.3	11.1	19	19.0x21.0	16	13	17.5	20